



Wings Platinum 4 3D Applications

Output of 2 separate Video/ Image Streams for 3D

3D (stereo) presentation data can be supplied in several data formats. In respect to video it is most common that 2 data streams are supplied, one with the right and one with the left eye image data.

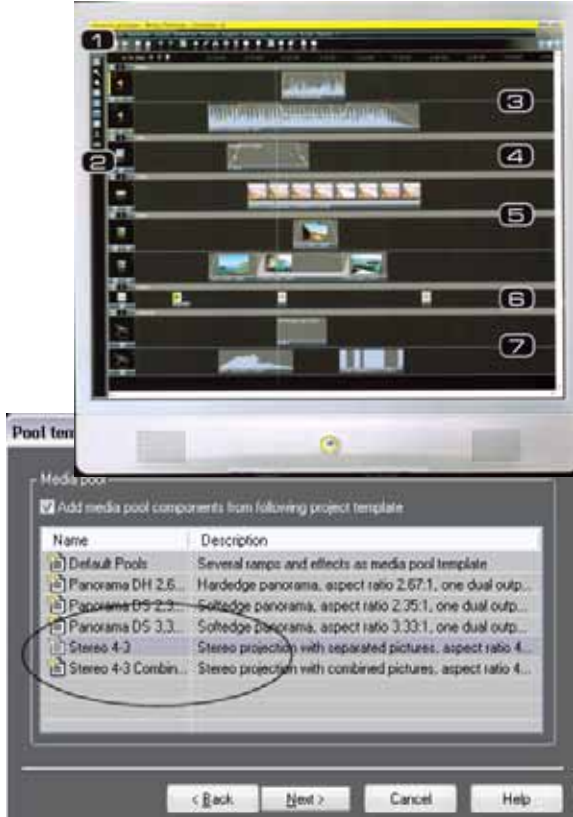
For playback on DVD's or other single channel devices these streams are combined using synchronizer and formatter. Most commonly are the data formats: Interlaced, frame sequential, side-by-side or top-bottom.

Each of these formats has some inherent loss in resolution. Wings Platinum can output each of these formats as well.

For large screen presentations it is better to maintain a high resolution per output channel. Wings Platinum 4 can be used for this application. As the media is integrated into the presentation program within Wings, a 100% synchronized output of each channel is guaranteed.

The material is imported to two separate tracks and visually lined up to the exact frame or clapper position. Once started, each track output is routed to a separate screen/ field, which in turn outputs to separate graphic card output. As the two tracks run side-by-side all the time, the image data will always be synchronized.

For work with images Wings Platinum has already pre-prepared templates installed.



Technical requirements:

2 x single MD or 1 x Dual Wings Platinum 4 MD license for 3 output on one PC (2 x projector, 1 x user interface).

1 x Single high power PC with Intel i7-950 CPU

1 x Quad 3.06G processor

6 GB RAM

1 x Solid State system drive

1 x Media drive (can be solid state)

2 graphic cards (i.e. ATI 5770)

High Power PS (750W+).

WIN 7 operating system